

**XIZIIPARKING**

HANGZHOU XIZI IPARKING CO., LTD.

NO.181 HONGDA ROAD,LINPING ECONOMIC DEVELOPMENT  
ZONE,HANGZHOU,P.R.CHINA 31119 9  
TEL: 86-571-85143660/8813661 FAX: 86-571-88139678-20#  
HTTP: WWW.XIZIPARKING.COM



**PSH  
PJS**

**PARKING  
SYSTEMS**



扫一扫了解更多

# CONTENTS

<b>01</b> /	<b>PSH</b>	<b>03</b>
	Chain type	04
	Wire rope type	06
	Chain type	09

<b>02</b> /	<b>PJS</b>	<b>10</b>
	MINI type	11
	Four column type	12
	Caisson type	13
	Two column type	14

Convenient  
maintenance

Strong  
scalability

Low cost



# PSH

Standard customized products

## Overview

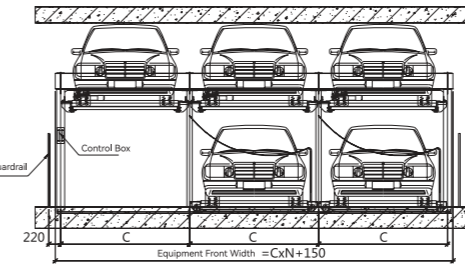
PSH lifting and horizontal parking garage is a parking method that extends the flat parking lot upwards. This type of garage is a commonly used parking equipment in the market, and different types or types of parking methods can be used according to the terrain characteristics. The equipment can be installed on the ground or in the basement.

CLASSIC STANDARDIZED CUSTOM PRODUCTS  
ECONOMIC AND PRACTICAL, HIGH QUALITY

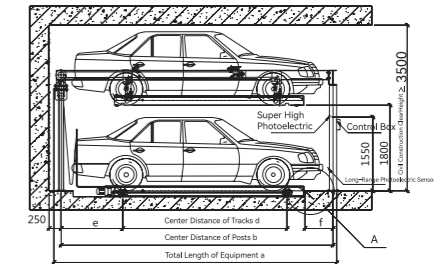
## PSH

## PSH2

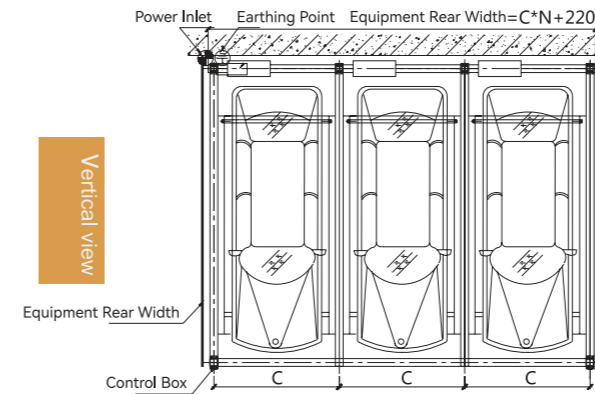
Elevations



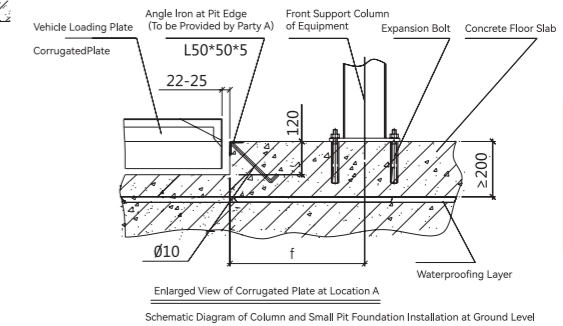
Side view



Vertical view



Component diagram



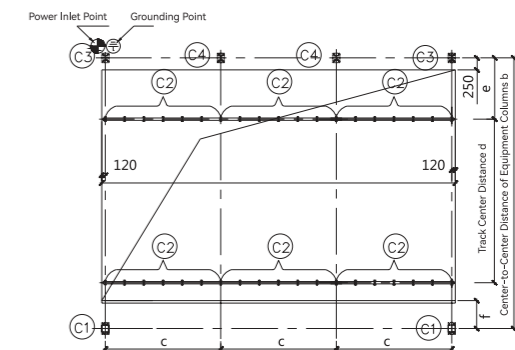
Mode	a	b	c	d	e	f
Z	5350	5125	2300	3400	1022	480
D	5650	5425	2350	3400	1172	630
T1	5850	5625	2400	3400	1272	730

Mode	Z	D	T1
Car length	4700 mm	5000 mm	5200 mm
Car width	1800 mm	1850 mm	1900 mm
With side mirror	1900 mm	1950 mm	2000 mm
tyre outboard	1760 mm	1800 mm	1860 mm
Car height	1550 mm	1550 mm	1550 mm
Car weight	2000 kg		
Lifting speed	4.0~5.0m/min		
Lateral speed	7.0~8.0m/min		
Driving method	Electric driven chain type		
Lifting motor	2.2Kw		
Horizontal motor	0.2Kw		
Power capacity	4KVA		
Power supply	AC380V 50Hz		
Operation Mode	Button or IC card(optional)		
Equipment rear width	$C \times N + 220$		
Car Lots	$N \times 2 - 1$		

Vehicle load of 2350kg, 2500kg, 3000kg can be customized by the request.

Parameter table



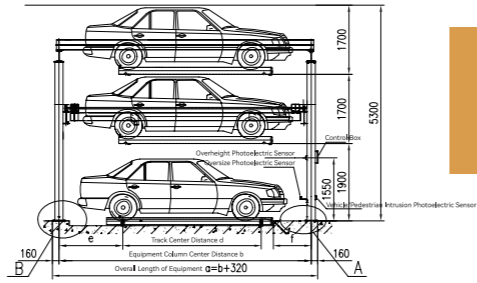
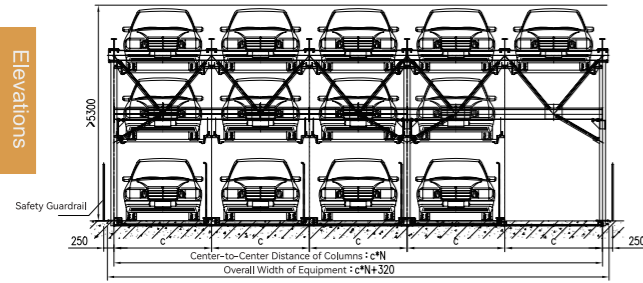
Column	C1	C2	C3	C4
Load(N)	31360	13720	10460	20920

Construction layout drawing

# PSH

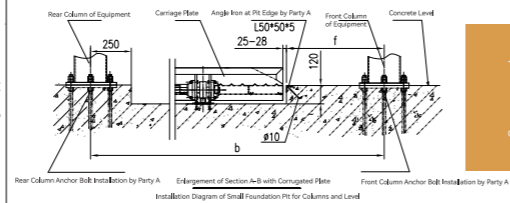
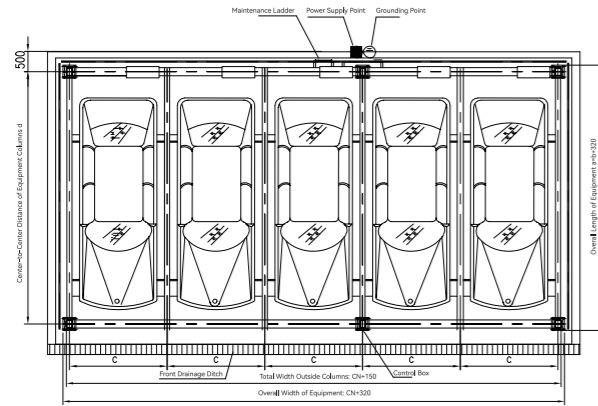
# PSH3

Elevations



Side view

Vertical view



Component diagram

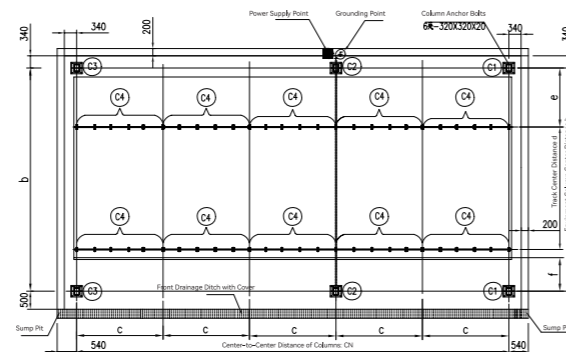
Mode	G	b	c	d	e	f
Z	6015	5695	2300	3400	1388	680
D	6315	5995	2350	3400	1538	830
T1	6515	6195	2400	3400	1638	930

Mode	Z	D	T1
Car length	4700 mm	5000 mm	5200 mm
Car width	1800 mm	1850 mm	1900 mm
With side mirror	1900 mm	1950 mm	2000 mm
tyre outboard	1760 mm	1800 mm	1860 mm
Car height	1550 mm	1550 mm	1550 mm
Car weight	2000 kg		
Lifting speed	4.0~5.0m/min		
Lateral speed	7.0~8.0m/min		
Driving method	Electric driven chain type		
Lifting motor	2.2Kw		
Horizontal motor	0.2Kw		
Power capacity	4KVA		
Power supply	AC380V 50Hz		
Operation Mode	Button or IC card(optional)		
Equipment rear width	C*N + 320		
Car Lots	N*3-2		

Vehicle load of 2350kg, 2500kg, 3000kg can be customized by the request.

Parameter table



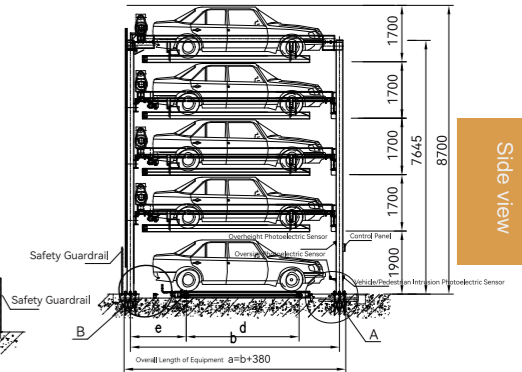
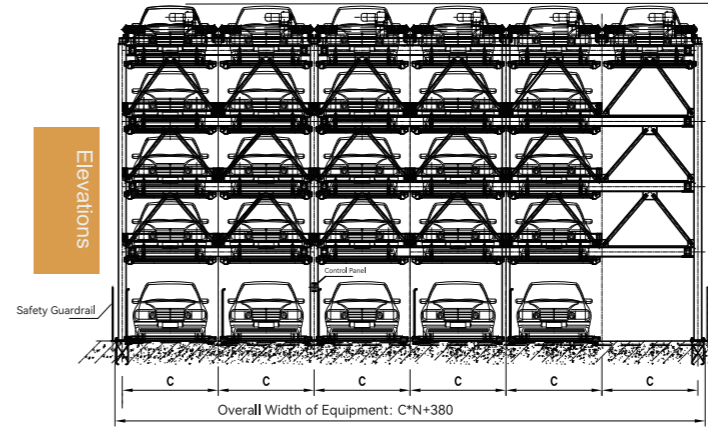
Load parameter table				
Column	C1	C2	C3	C4
Load(KN)	52	127	75	22

Construction layout drawing

# PSH

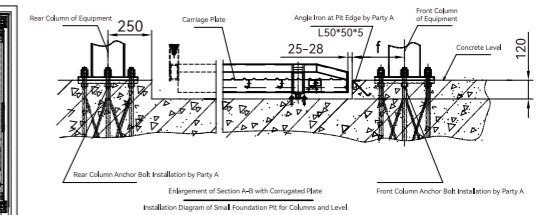
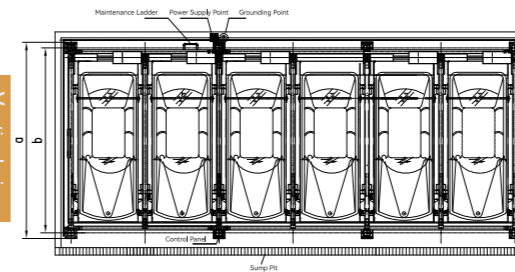
# PSH5

Elevations



Side view

Vertical view



Component diagram

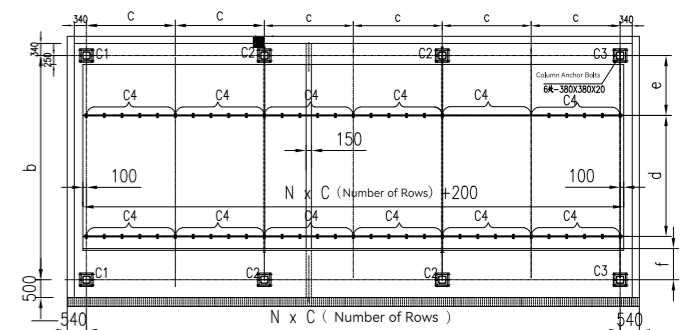
Mode	G	b	c	d	e	f
Z	6180	5800	2400	3400	1433	625
D	6480	6100	2450	3400	1583	775
T1	6680	6300	2500	3400	1663	875

Mode	Z	D	T1
Car length	4700 mm	5000 mm	5200 mm
Car width	1800 mm	1850 mm	1900 mm
With side mirror	1900 mm	1950 mm	2000 mm
tyre outboard	1760 mm	1800 mm	1860 mm
Car height	1550 mm	1550 mm	1550 mm
Car weight	2000 kg		
Lifting speed	4.0~5.0m/min		
Lateral speed	7.0~8.0m/min		
Driving method	Electric driven chain type		
Lifting motor	2.2Kw		
Horizontal motor	0.2Kw		
Power capacity	4KVA		
Power supply	AC380V 50Hz		
Operation Mode	Button or IC card(optional)		
Equipment rear width	C*N + 320		
Car Lots	N*3-2		

Vehicle load of 2350kg, 2500kg, 3000kg can be customized by the request.

Parameter table



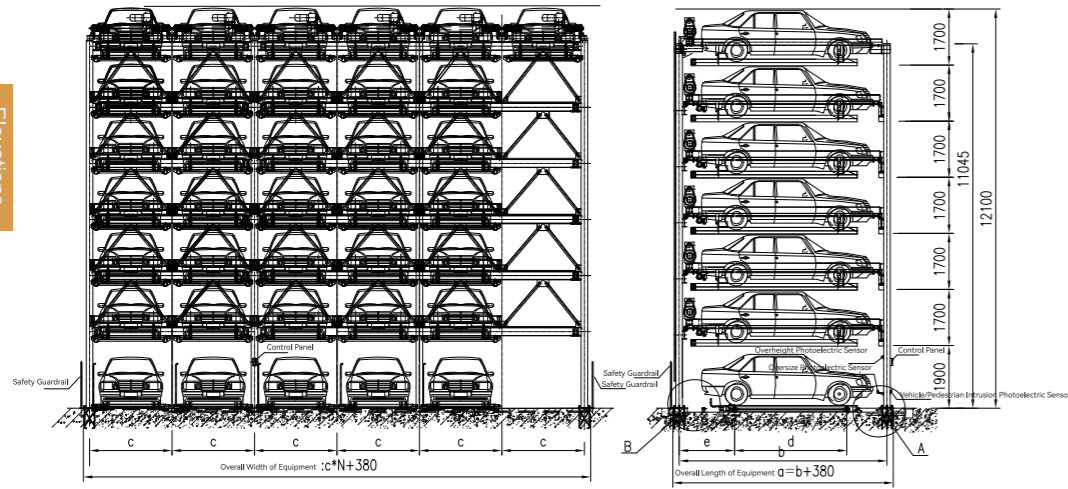
Load parameter table				
Column	C1	C2	C3	C4
Structural grouping		3+2或2+3	2+2	
Load (KN)	115	280	230	22

Construction layout drawing

PSH

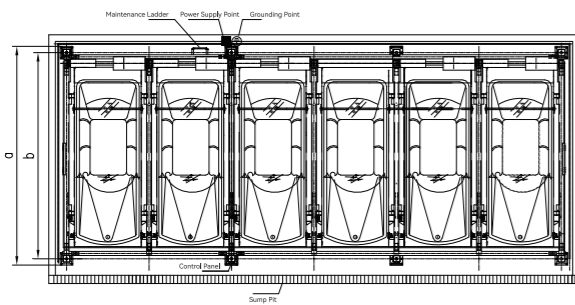
PSH7

Elevations

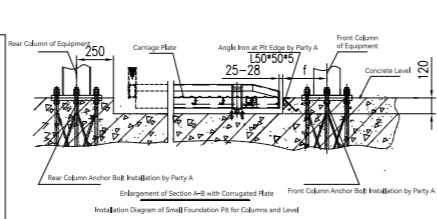


Side view

Vertical view



Component diagram

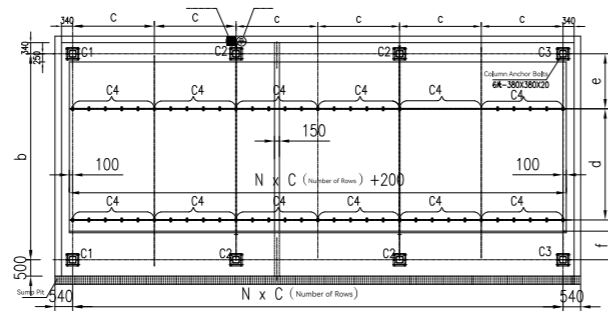


Mode	a	b	c	d	e	f
Z	6200	5820	2400	3400	1443	635
D	6500	6120	2450	3400	1593	785
T1	6700	6320	2500	3400	1693	885

Mode	Z	D	T1
Car length	4700 mm	5000 mm	5200 mm
Car width	1800 mm	1850 mm	1900 mm
With side mirror	1900 mm	1950 mm	2000 mm
tyre outboard	1760 mm	1800 mm	1860 mm
Car height	1550 mm	1550 mm	1550 mm
Car weight	2000 kg		
Lifting speed	4.0~5.0m/min		
Lateral speed	7.0~8.0m/min		
Driving method	Motor wire rope type		
Lifting motor	2.2Kw(2-4floors)/3.7Kw (5-7floors)		
Horizontal motor	0.2Kw		
Power capacity	6KVA		
Power supply	AC380V 50Hz		
Operation Mode	Button or IC card(optional)		

Vehicle load of 2350kg, 2500kg, 3000kg can be customized by the request.

Parameter table



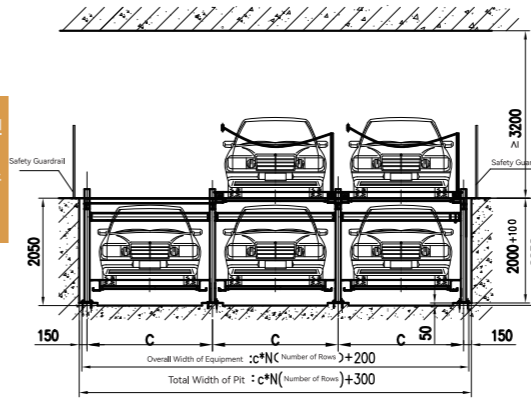
Load parameter table				
Column	C1	C2	C3	C4
Load <N>	178	356	178	22

Construction layout drawing

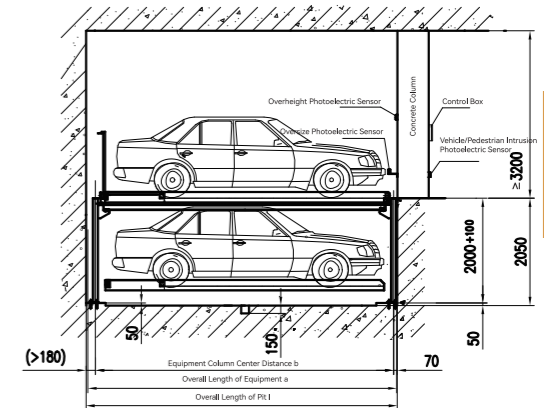
PSH

PSH2-D1

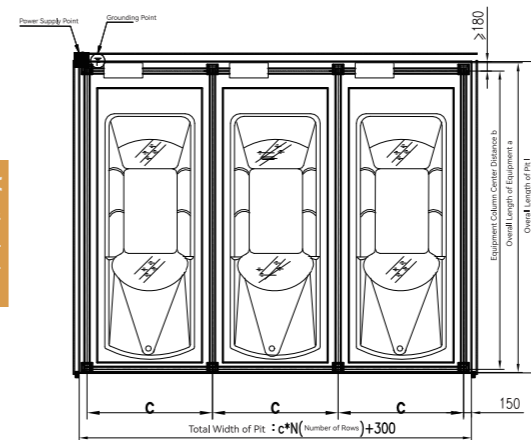
Elevations



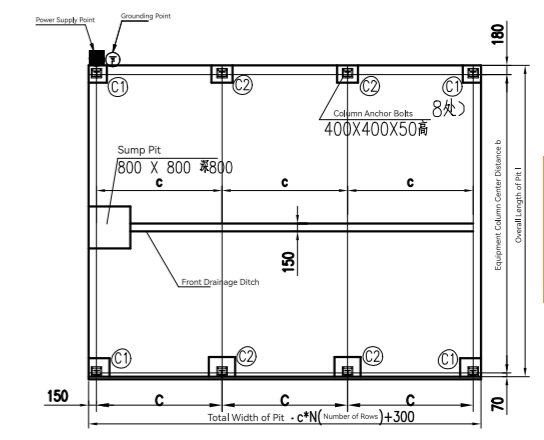
Side view



Vertical view



Component diagram



Mode	Z	D	T1
Car length	4700 mm	5000 mm	5200 mm
Car width	1800 mm	1850 mm	1900 mm
With side mirror	1900 mm	1950 mm	2000 mm
tyre outboard	1760 mm	1800 mm	1860 mm
Car height	1550 mm	1550 mm	1550 mm
Car weight	2000 kg		
Lifting speed	4.0~5.0m/min		
Lateral speed	7.0~8.0m/min		
Driving method	Electric driven chain type		
Lifting motor	2.2Kw		
Horizontal motor	0.2Kw		
Power capacity	4KVA		
Power supply	AC380V 50Hz		
Operation Mode	Button or IC card(optional)		
Equipment rear width	C*N+220		
Car Lots	N*2-1		

Vehicle load of 2350kg, 2500kg, 3000kg can be customized by the request.

Parameter table

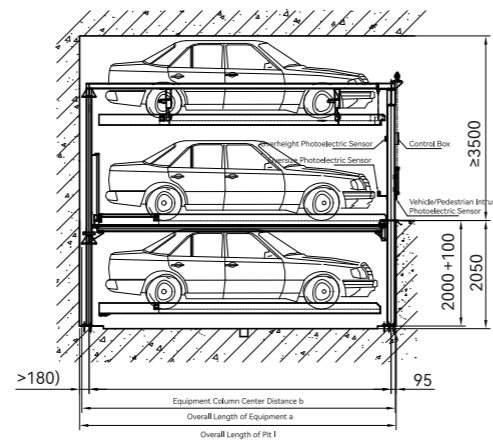
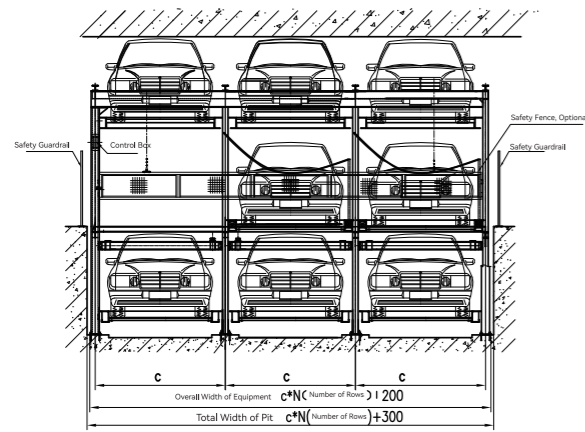
Mode	L	a	b	c
Z	5450	5410	5200	2300
D	5750	5710	5500	2350
T1	5950	5910	5700	2400

Load parameter table		
Column	C1	C2
Load <N>	17500	35000

PSH

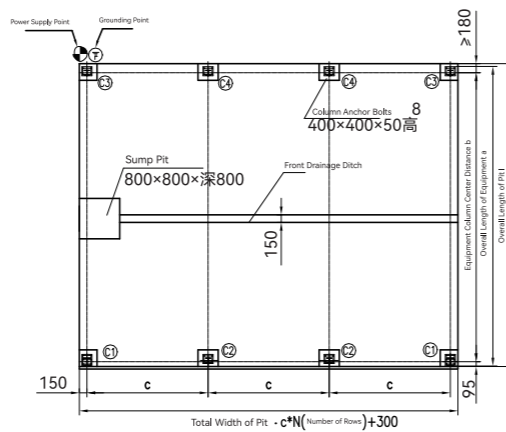
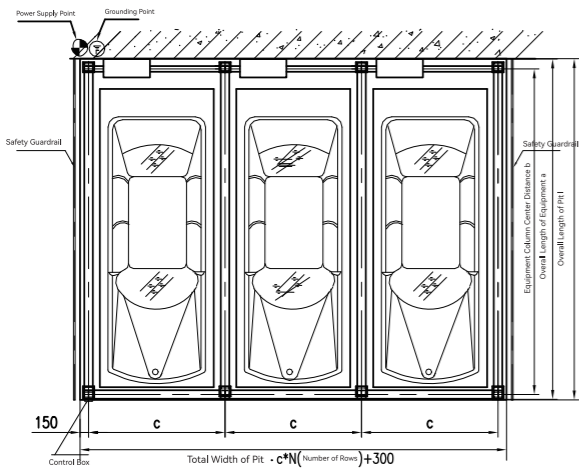
PSH3-D1

Elevations



Side view

Vertical view



Component diagram

Mode	Z	D	T1
Car length	4700 mm	5000 mm	5200 mm
Car width	1800 mm	1850 mm	1900 mm
With side mirror	1900 mm	1950 mm	2000 mm
tyre outboard	1760 mm	1800 mm	1860 mm
Car height	1550 mm	1550 mm	1550 mm
Car weight	2000 kg		
Lifting speed	4.0~5.0m/min		
Lateral speed	7.0~8.0m/min		
Driving method	Electric driven chain type		
Lifting motor	2.2Kw		
Horizontal motor	0.2Kw		
Power capacity	4KVA		
Power supply	AC380V 50Hz		
Operation Mode	Button or IC card(optional)		
Equipment rear width	C*N + 260		
Car Lots	N * 3-1		

Vehicle load of 2350kg, 2500kg, 3000kg can be customized by the request.

Mode	L	a	b	c
Z	5500	5435	5225	2300
D	5800	5735	5525	2350
T1	6000	5935	5725	2400

Load parameter table				
Column	C1	C2	C3	C4
Load (kN)	55860	31360	25480	50960

Parameter table



PJS

MINI AUTO PARKING-PJS

The advantages of simple structure, beautiful appearance. Using hydraulic lifting mode, operation is simple, quiet noise.

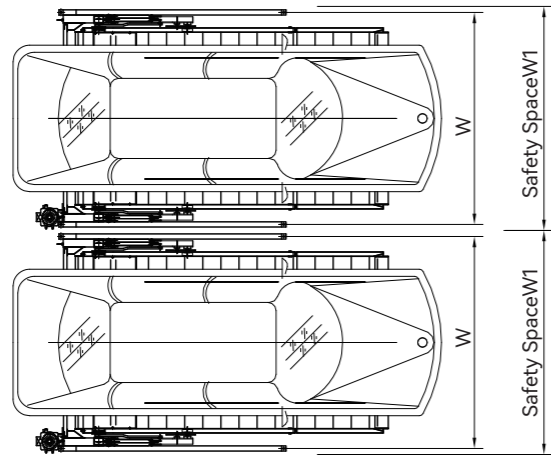


CLASSIC STANDARDIZED CUSTOM PRODUCTS  
ECONOMIC AND PRACTICAL, HIGH QUALITY

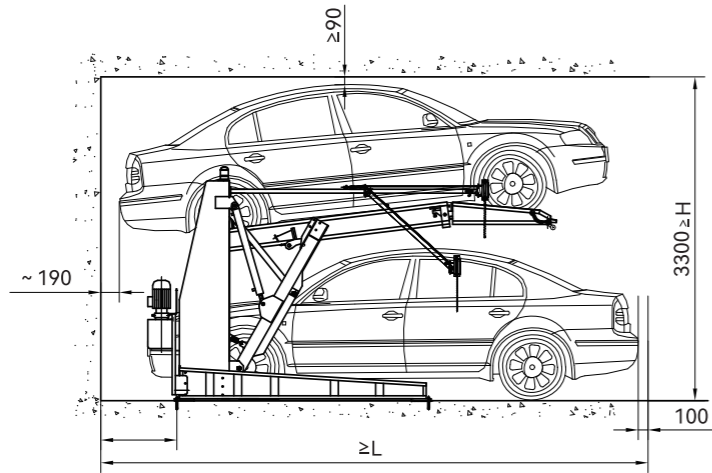
PJS

MINI

Vertical view



Side view



Technique Specification		
Mode	31A1	31A1+
Height	3300	4370
Width	2420	2496
Width1	2560	2636
Length	5580	6300
Operation Mode	Knob key switch	Knob key switch
Driving method	Hydraulic	Hydraulic
Motor	1.5KW	1.5KW
Power capacity	3KVA	3KVA
Power supply	AC220V 50Hz	AC220V 50Hz
Speed	UP 50S DOWN 25S	UP 50S DOWN 15S
Hydraulic cylinder pressure during operation	16 MPa	20 MPa
Overflow of hydraulic cylinder pressure	20 MPa	24 MPa
Car Lots	2	2

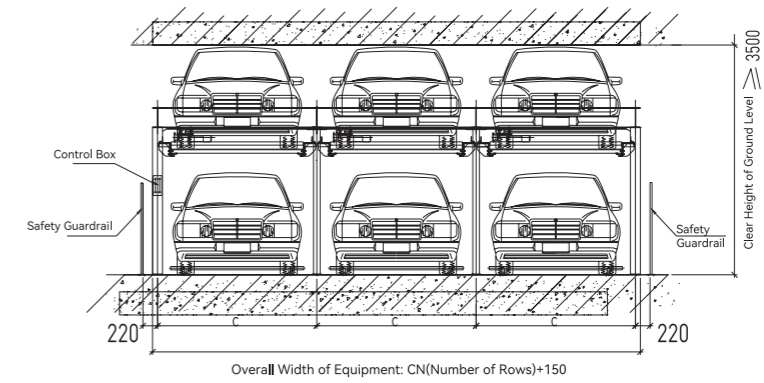
Maximum Car Dimension			
Mode	31A1	31A1+	
Maximum Car Dimension	Car length	5000mm	5300mm
	Car width	1850mm	1950mm
	With side mirror	1950mm	2050mm
	Car height	1550mm	2000mm
	Car weight	1700kg	2200kg

Parameter table

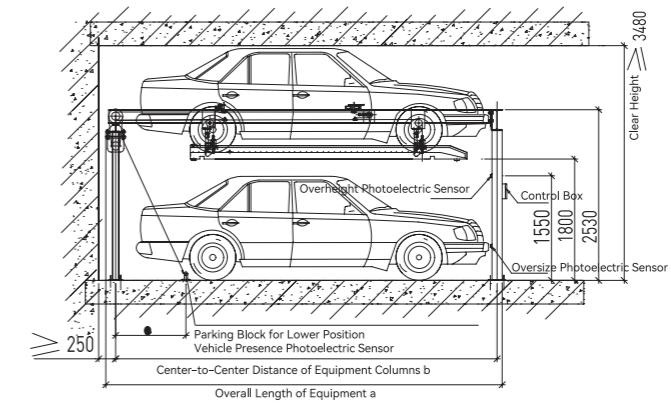
PJS

Four column type

Elevations



Side view

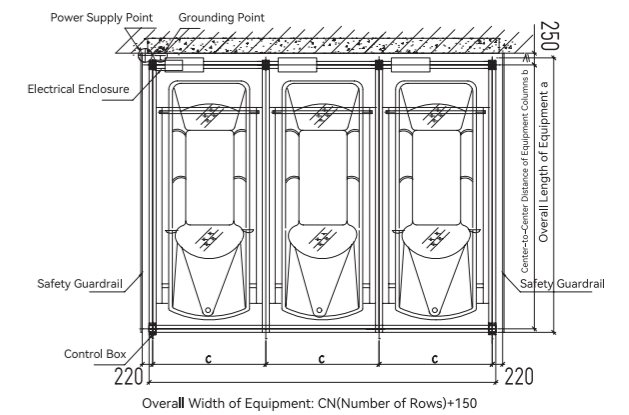


Mode	Z	D	T1	
Maximum Car Dimension	Car length	4700 mm	5000 mm	5200 mm
	Car width	1800 mm	1850 mm	1900 mm
	With side mirror	1900 mm	1950 mm	2000 mm
	tyre outboard	1760 mm	1800 mm	1860 mm
	Car height	1550 mm	1550 mm	1550 mm
	Car weight	2000 kg	2000 kg	2000 kg
Lifting speed	4.0~5.0m/min			
Driving method	Electric driven chain type			
Lifting motor	2.2KW			
Power capacity	4KVA			
Power supply	AC380V 50Hz			
Operation Mode	Button or IC card(optional)			
Equipment rear width	C*N + 150			
Car Lots	N*2			

Vehicle load of 2350kg, 2500kg, 3000kg can be customized by the request.

Mode	A	B	C	E
Z	5350	5125	2300	800
D	5650	5425	2350	950
T1	5850	5625	2400	1050

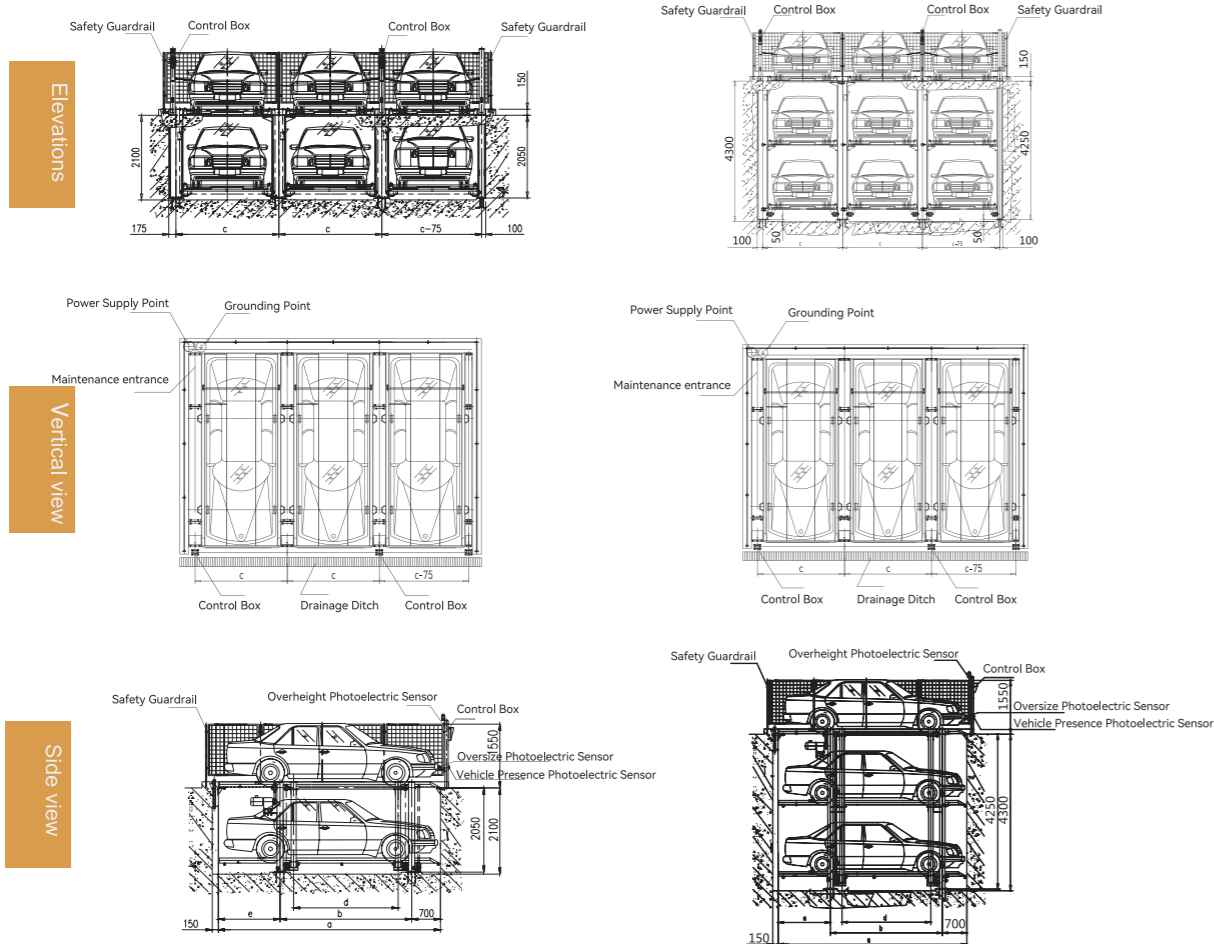
Parameter table



Vertical view

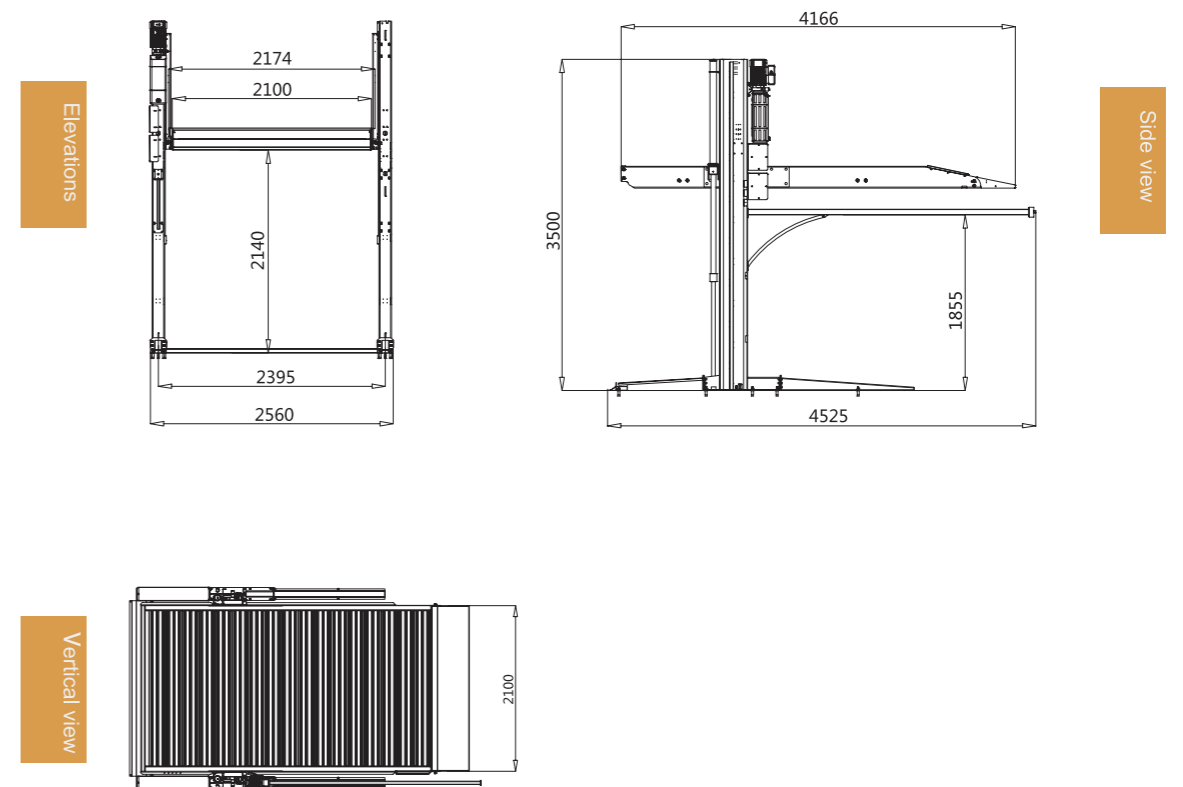
PJS

Caisson type



PJS

Two column type



Mode	Z	D	T1
Car length	4700 mm	5000 mm	5200 mm
Car width	1800 mm	1850 mm	1900 mm
With side mirror	1900 mm	1950 mm	2000 mm
tyre outboard	1760 mm	1800 mm	1860 mm
Car height	1550 mm	1550 mm	1550 mm
Car weight	2000 kg	2000 kg	2000 kg
Lifting speed	2~3 m/min		
Driving method	Electric driven chain type		
Lifting motor	2.2Kw/3.7Kw		
Power capacity	Mx5.5KVA		
Power supply	AC380V 50Hz		
Operation Mode	Button		
Equipment rear width	C*N+400		
Car Lots	N*3		

Vehicle load of 2350kg, 2500kg, 3000kg can be customized by the request.

Parameter table

Mode	A	B	C	D	E
Z	4900	3000	2450	2340	1200
D	5200	3000	2500	2340	1500
T1	5400	3200	2550	2540	1500

Maximum Car Dimension

Mode	Two column type
Car length	5200 mm
Car width	1850 mm
With side mirror	1950 mm
Car height	1550 mm
Car weight	2700 kg

Parameter table

Technique Specification

Operation Mode	Knob key switch
Driving method	Hydraulic
Motor	2.2kw
Power capacity	3 KVA
Power supply	AC220V \ AC380
Speed	UP 50S DOWN 25S
Hydraulic cylinder pressure during operation	AC24V
Overflow of hydraulic cylinder pressure	2100mm
Car Lots	2



China 5000car lots



Xinjiang Junhao Paris Manor

China 2468car lots




Aksu Jinlan Square, Xinjiang

China 1636car lots



China Life Tower

China 1610car lots



Hangzhou Gaode Land Plaza

China 2111car lots




Harrison International Peace Hospital

China 1890car lots




Kaifeng Dongfang Jindian Imperial Palace

China 1100car lots




Hangzhou Construction Engineering EIC

China 1510car lots




Shanghai Lingang Information Flying Fish Plot

China 2000car lots



Puyang Binhu Bay Community

China 1863car lots




Langshi Youth Block Project

China 18car lots



Nanjing Provincial Hospital of Traditional Chinese Medicine Niushoushan Branch

Hong Kong 15car lots



Disciplined services hostel project at Baek Kok Fire Services Department

